



SIMPLY STAINLESS

Modular Sinks, Tables & Shelving



18-7-0900



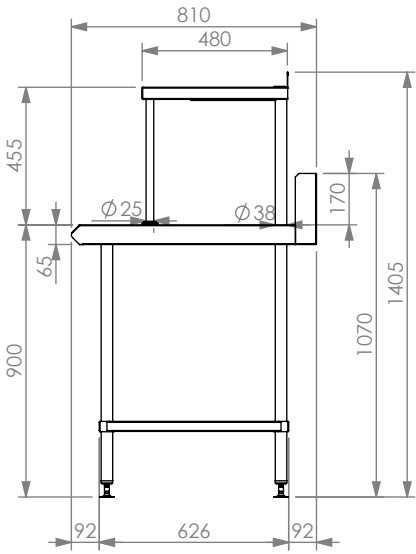
18-BS



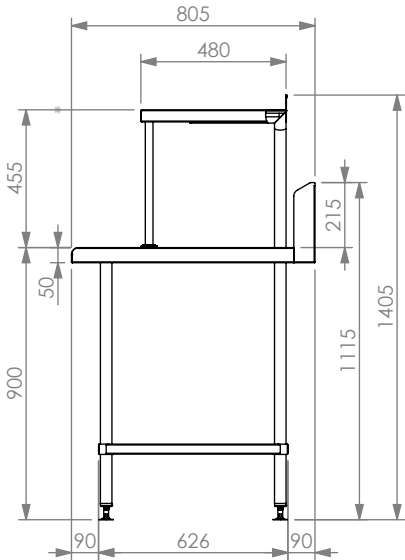
18-WD

SPECIFICATION

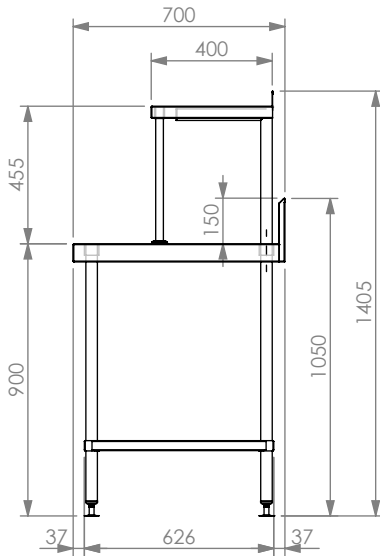
Tops	<ul style="list-style-type: none">- High quality 304 grade stainless steel.- 1.2mm gauge, no. 4 Finnish.- Studs under for fixing accessories.- 100mm upstand (150mm bevelled upstand on 700 series)
Core	<ul style="list-style-type: none">- 3mm zinc anneal.- Marine grade protective paint .
Frames	<ul style="list-style-type: none">- Ø38mm round stainless steel tube.- Satin polished.- Machined collars.- Adjustable stainless disc feet.- front legs on overshell are 25mm round polished tube & are removable if necessary (not to be removed on Blueseal and Waldorf benches)
Undershelves	<ul style="list-style-type: none">- High quality stainless steel.- 1.2mm gauge, no. 4 Finnish.- Top hat stiffening with channels.



BLUESEAL PROFILE



WALDORF PROFILE



*700mm DEEP MODULE ELEVATION.

Salamander Bench

18	Salamander Bench			
	Product Code	Dimensions (mm)	Unit weight (Kg)	Load capacity (Kg)
	18-6-0900	900x600x900 (100mm Upstand)	36.09	180
	18-7-0900	900x700x900 (150mm Upstand)	49.17	180
	18-BS	900x810x900 (Blueseal profile) NB. Top shelf is 480mm deep	52.9	180
	18-WD	900x805x900 (Waldorf profile) NB. Top shelf is 480mm deep	54.4	180



**100%
RECYCLABLE
STAINLESS STEEL**

